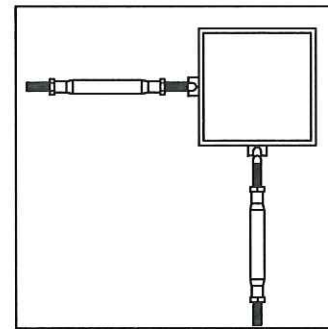
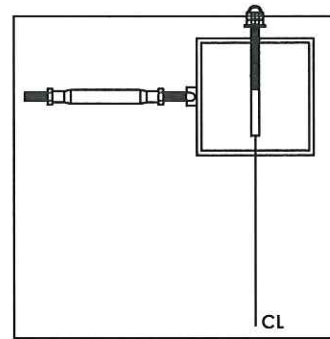


SINGLE POST



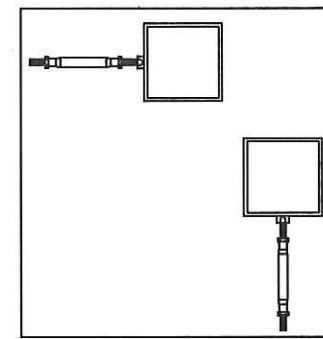
BOTH FITTING ATTACHED TO FACE

SINGLE POST



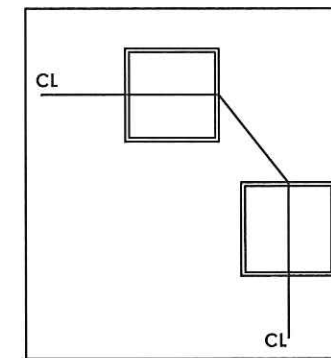
ONE FITTING ATTACHES THROUGH POST AND OTHER ATTACHES TO FACE

DOUBLE POST



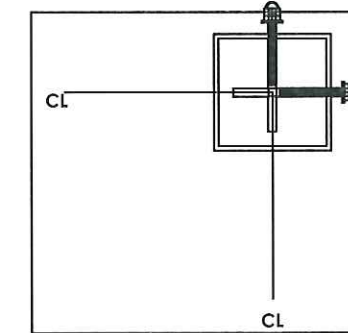
BOTH FITTINGS ATTACH TO FACE

DOUBLE POST



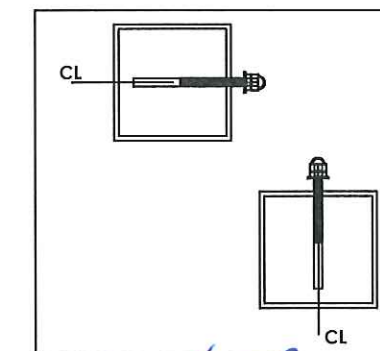
CABLE RUNS CONTINUOUSLY THROUGH THE CORNER

SINGLE POST

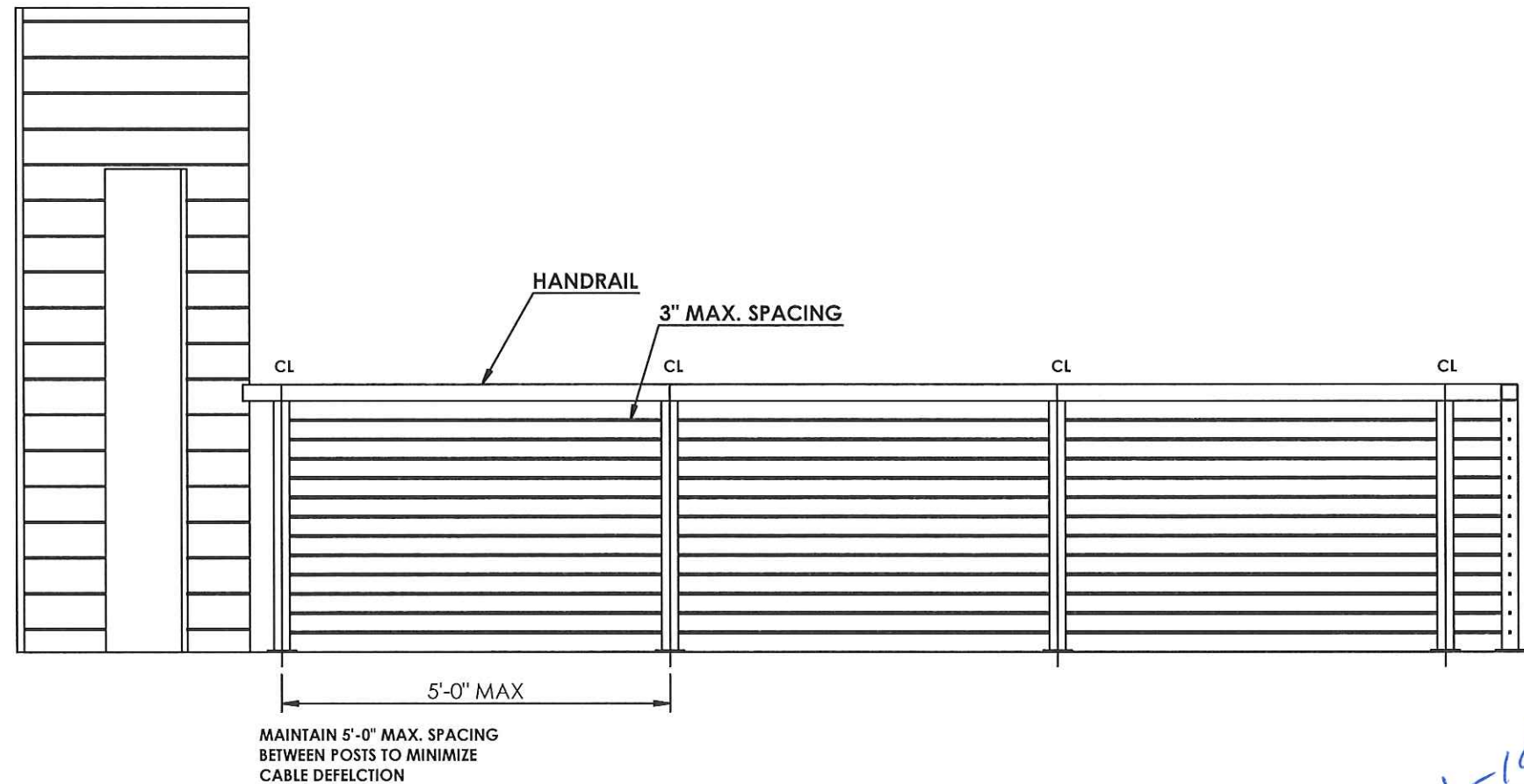


BOTH FITTINGS ATTACHED THROUGH POST. MUST OFFSET DRILL HOLES BY AT LEAST 1/2"

SINGLE POST



BOTH FITTINGS ATTACHED THROUGH POST.



NOTE: BUILDING CODES VARY BY CITY & COUNTRY. FOLLOWING THE INSTALLATION AND RAILING DESIGN INSTRUCTION AS DETAILED IN THIS DRAWING DOES NOT GUARANTEE CODE COMPLIANCE IN ALL AREAS, BEFORE STARING THE PROJECT, CHECK WITH LOCAL REQUIREMENT FOR USING AND INSTALLING CABLE RAILINGS.



**Precision Structural Engineering, Inc.**  
 4810 B Shasta Way  
 Klamath Falls, Oregon 97603  
 Phone: (541) 850-6300  
 Fax: (541) 850-6233  
 836 Mason Way  
 Medford OR, 97501  
 www.structure1.com  
 pse@charter.net

Project:  
 STAINLESS CABLE & RAILING

Owner:  
 Stainless Cable & Railing

Stamp:

REVISIONS:  
 MARK DATE DES. BY:

|  |  |  |
|--|--|--|
|  |  |  |
|  |  |  |
|  |  |  |
|  |  |  |
|  |  |  |
|  |  |  |
|  |  |  |
|  |  |  |
|  |  |  |
|  |  |  |

|              |       |
|--------------|-------|
| DRAWN BY: AF |       |
| UPDATED BY:  |       |
| NAME:        | DATE: |
| XX           | XX    |
| XX           | XX    |
| XX           | XX    |
| XX           | XX    |

DS. BY: AF  
 CHK BY: AF  
 DATE: 1-16-2017

PROJECT #:  
 Stainless Cable & Railing  
 216-2

TITLE:  
 Details

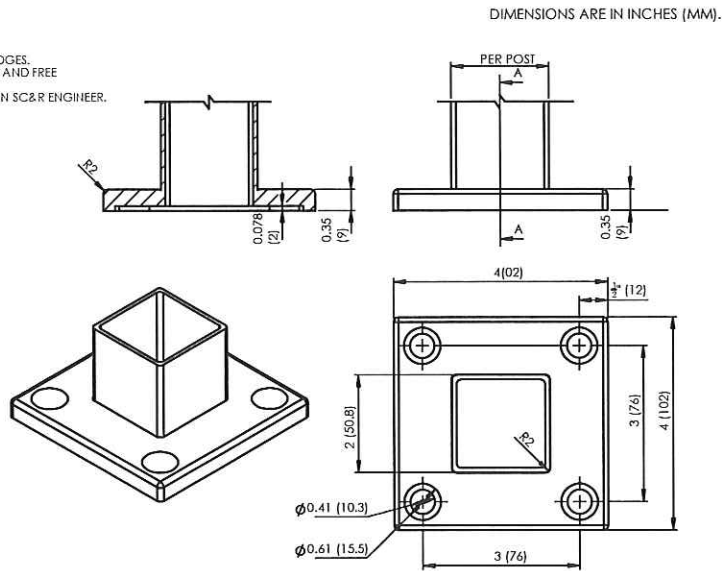
PAGE NO:

S1



- NOTES: UNLESS OTHERWISE SPECIFIED  
1. DIMENSIONS ARE IN INCHES (MM).  
2. MACHINED SURFACES TO BE 63uIN MAX.  
3. DO NOT SCALE DRAWING.  
4. PART TO BE FREE OF BURRS AND SHARP EDGES.  
5. ALL MATERIAL TO BE CLEAN, DEGREASED AND FREE OF ALL IMPURITIES.  
6. ANY CHANGE MUST BE AUTHORIZED BY AN SC&R ENGINEER.

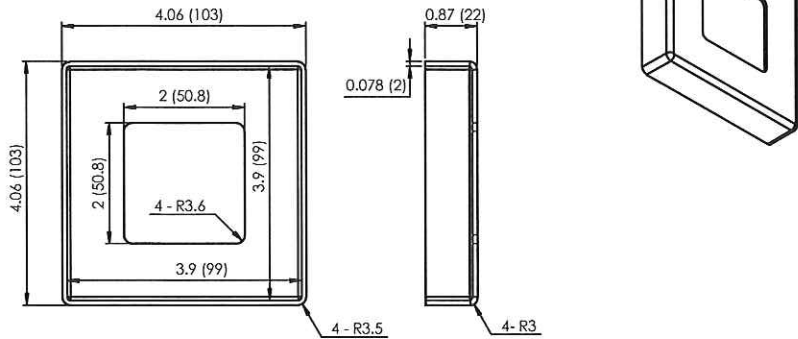
MATERIAL TYPE: 316 SS  
VENDOR ID:



TERMINAL LONG NECK FLOOR FLANGE

- NOTES: UNLESS OTHERWISE SPECIFIED  
1. DIMENSIONS ARE IN INCHES (MM).  
2. MACHINED SURFACES TO BE 63uIN MAX.  
3. DO NOT SCALE DRAWING.  
4. PART TO BE FREE OF BURRS AND SHARP EDGES.  
5. ALL MATERIAL TO BE CLEAN, DEGREASED AND FREE OF ALL IMPURITIES.  
6. ANY CHANGE MUST BE AUTHORIZED BY AN SC&R ENGINEER.

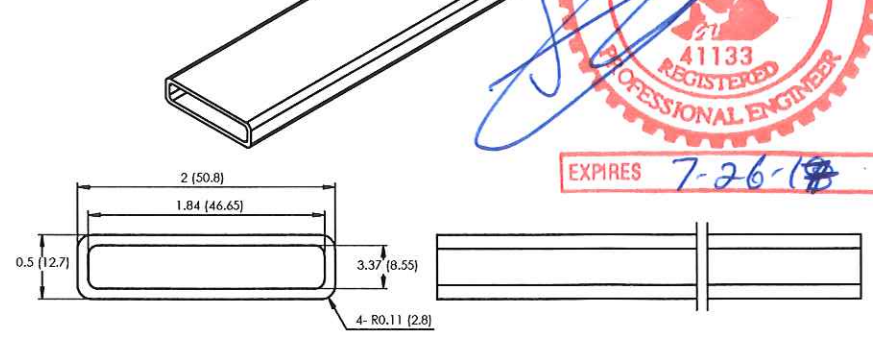
MATERIAL TYPE: 316 SS  
VENDOR ID:



COVER PLATE-SQ. -INTERMEDIATE

- NOTES: UNLESS OTHERWISE SPECIFIED  
1. DIMENSIONS ARE IN INCHES (MM).  
2. MACHINED SURFACES TO BE 63uIN MAX.  
3. DO NOT SCALE DRAWING.  
4. PART TO BE FREE OF BURRS AND SHARP EDGES.  
5. ALL MATERIAL TO BE CLEAN, DEGREASED AND FREE OF ALL IMPURITIES.  
6. ANY CHANGE MUST BE AUTHORIZED BY AN SC&R ENGINEER.

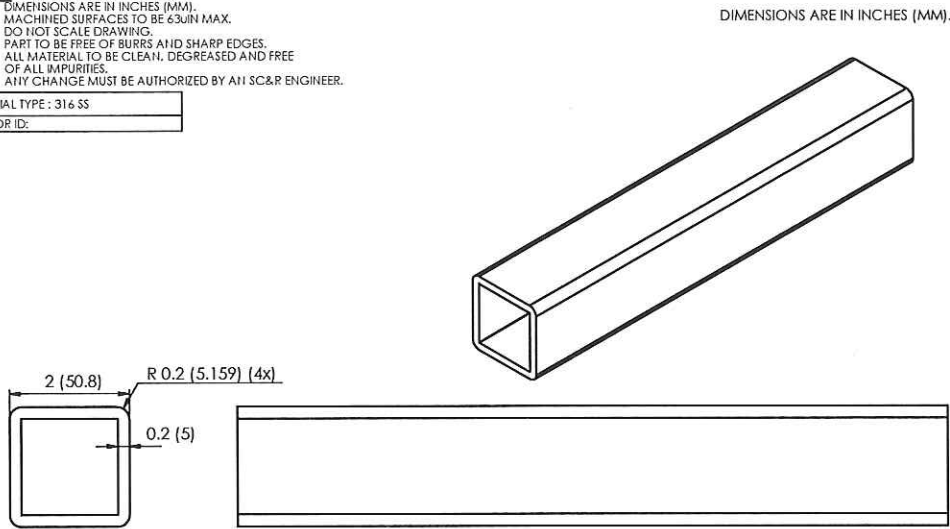
MATERIAL TYPE: 316 SS  
VENDOR ID:



RECTANGULAR TUBING

- NOTES: UNLESS OTHERWISE SPECIFIED  
1. DIMENSIONS ARE IN INCHES (MM).  
2. MACHINED SURFACES TO BE 63uIN MAX.  
3. DO NOT SCALE DRAWING.  
4. PART TO BE FREE OF BURRS AND SHARP EDGES.  
5. ALL MATERIAL TO BE CLEAN, DEGREASED AND FREE OF ALL IMPURITIES.  
6. ANY CHANGE MUST BE AUTHORIZED BY AN SC&R ENGINEER.

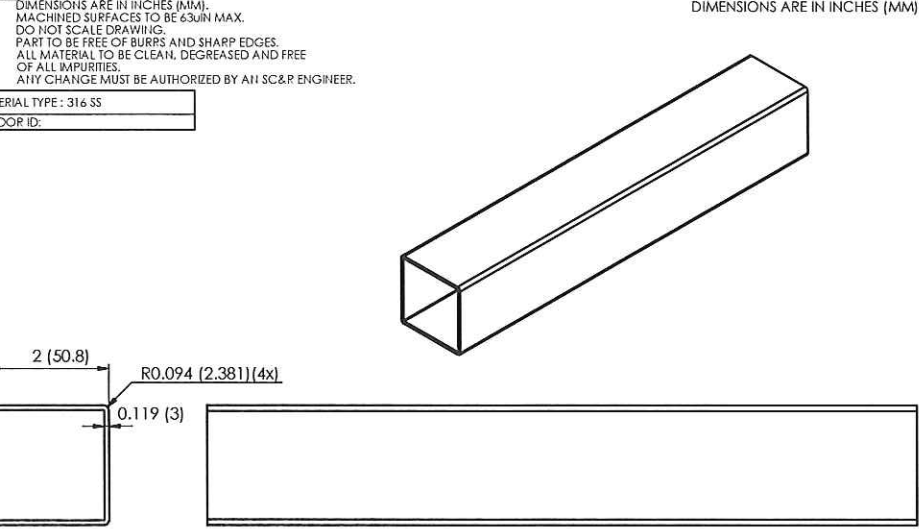
MATERIAL TYPE: 316 SS  
VENDOR ID:



2" Square Terminal Tubing

- NOTES: UNLESS OTHERWISE SPECIFIED  
1. DIMENSIONS ARE IN INCHES (MM).  
2. MACHINED SURFACES TO BE 63uIN MAX.  
3. DO NOT SCALE DRAWING.  
4. PART TO BE FREE OF BURRS AND SHARP EDGES.  
5. ALL MATERIAL TO BE CLEAN, DEGREASED AND FREE OF ALL IMPURITIES.  
6. ANY CHANGE MUST BE AUTHORIZED BY AN SC&R ENGINEER.

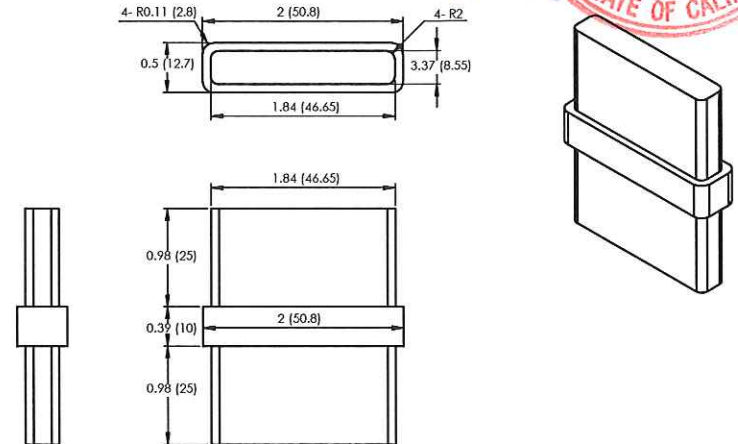
MATERIAL TYPE: 316 SS  
VENDOR ID:



2" Square Terminal Tubing

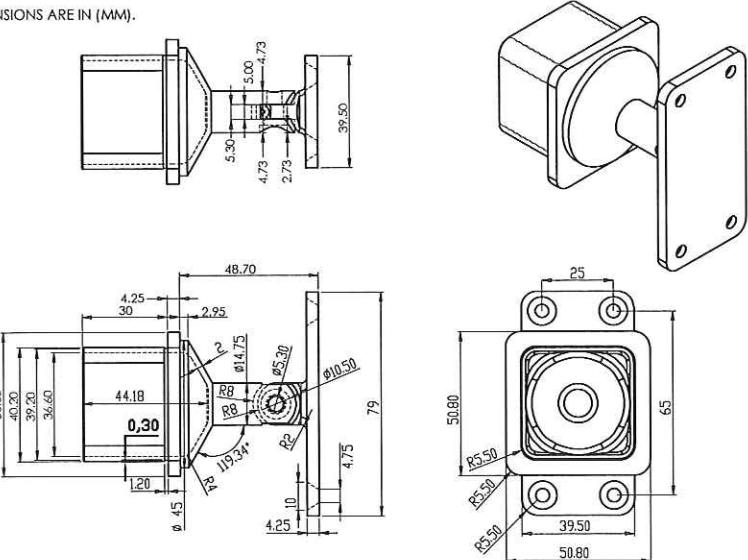
- NOTES: UNLESS OTHERWISE SPECIFIED  
1. DIMENSIONS ARE IN INCHES (MM).  
2. MACHINED SURFACES TO BE 63uIN MAX.  
3. DO NOT SCALE DRAWING.  
4. PART TO BE FREE OF BURRS AND SHARP EDGES.  
5. ALL MATERIAL TO BE CLEAN, DEGREASED AND FREE OF ALL IMPURITIES.  
6. ANY CHANGE MUST BE AUTHORIZED BY AN SC&R ENGINEER.

MATERIAL TYPE: 316 SS  
VENDOR ID:



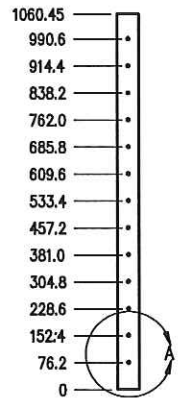
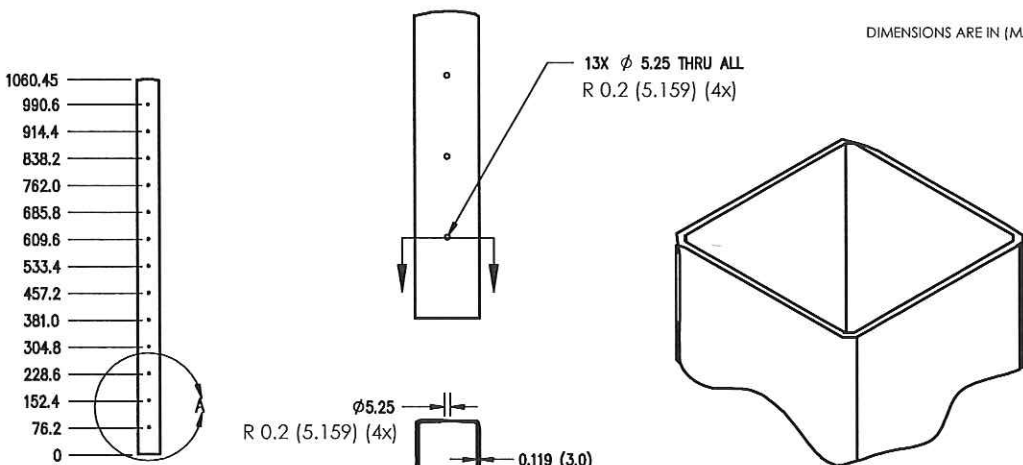
RECTANGULAR TUBE INLINE SPLICE

DIMENSIONS ARE IN (MM).



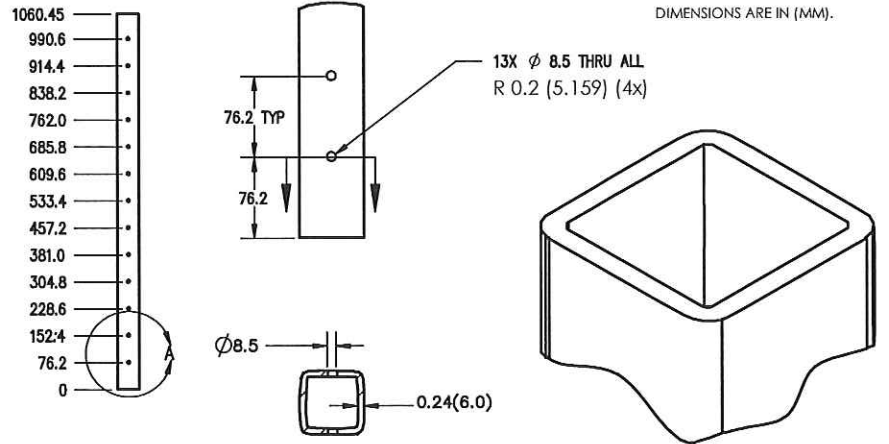
Square Tube Deck-Mount 42\" Intermediate Post

DIMENSIONS ARE IN (MM).



Square Tube Deck-Mount 42\" Tensioner Terminal Post

DIMENSIONS ARE IN (MM).



Precision  
Structural  
Engineering,  
Inc.

4810 B Shasta Way  
Klamath Falls, Oregon  
97603  
Phone: (541) 850-6300  
Fax: (541) 850-6233

836 Mason Way  
Medford OR, 97501  
www.structure1.com  
pser@charter.net

Project:  
  
STAINLESS  
CABLE & RAILING

Owner:  
  
Stainless Cable &  
Railing

Stamp:

REVISIONS:  
MARK DATE DES BY:

| MARK | DATE | DES | BY |
|------|------|-----|----|
|      |      |     |    |
|      |      |     |    |
|      |      |     |    |
|      |      |     |    |
|      |      |     |    |
|      |      |     |    |
|      |      |     |    |
|      |      |     |    |
|      |      |     |    |

DRAWN BY: AF

UPDATED BY:

NAME DATE

XX XX

XX XX

XX XX

XX XX

DS. BY: AF

CHK BY: AF

DATE: 1-16-2017

PROJECT #:

SOUTHERN OREGON

STEEL 216-2

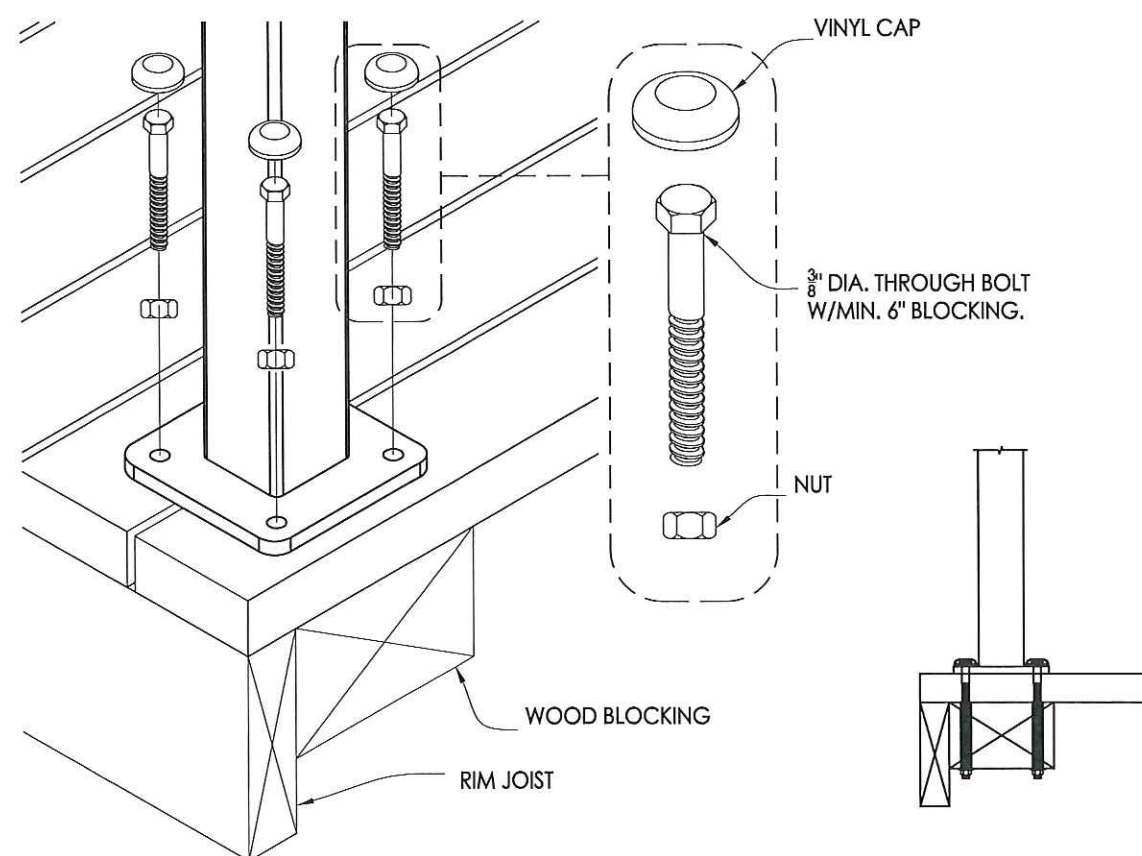
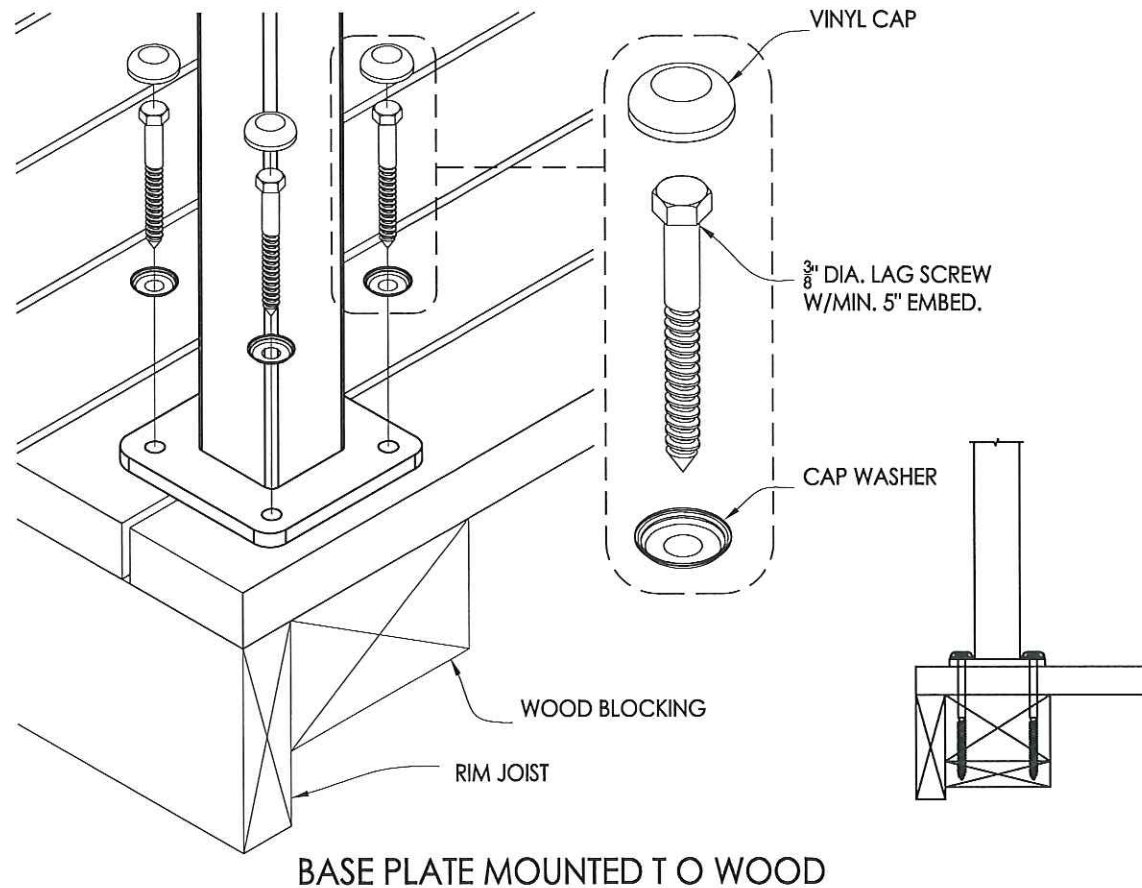
TITLE:

Details

PAGE NO:

S2





**Precision Structural Engineering, Inc.**

4810 B Shasta Way  
Klamath Falls, Oregon 97603  
Phone: (541) 850-6300  
Fax: (541) 850-6233

836 Mason Way  
Medford OR, 97501  
www.structure1.com  
psci@charter.net

Project:

STAINLESS CABLE & RAILING

Owner:

Stainless Cable & Railing

Stamp:

REVISIONS:

| MARK | DATE | DES. | BY: |
|------|------|------|-----|
|      |      |      |     |
|      |      |      |     |
|      |      |      |     |
|      |      |      |     |
|      |      |      |     |
|      |      |      |     |
|      |      |      |     |
|      |      |      |     |

DRAWN BY: AF

UPDATED BY:

| NAME: | DATE: |
|-------|-------|
| XX    | XX    |
| XX    | XX    |
| XX    | XX    |
| XX    | XX    |

DS. BY: AF

CHK BY: AF

DATE: 1-16-2017

PROJECT #:

SOUTHERN OREGON STEEL 216-2

TITLE:

Wood connection Details

PAGE NO:

S3