

Phone/Fax: 888-686-7245 (RAIL)

Email: sales@stainlesscablerailing.com

Website: www.stainlesscablerailing.com

Address: 4055 S Grant St.
Washougal, WA 98671

CableView® STAINLESS STEEL INSTRUCTIONS

Choose **STAINLESS CABLE & RAILING™** for all your fittings and cablerail assemblies! **SIMPLE, STRONG**

Table of Contents:

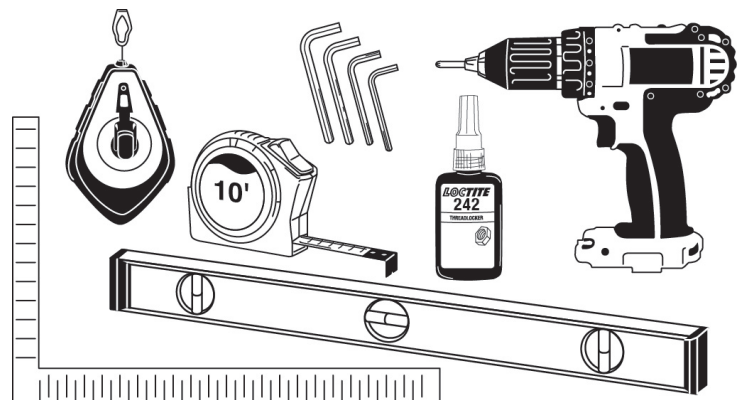
1. NECESSARY TOOLS
2. LAYOUT
3. EPOXY TUBE FITTINGS
4. INSTALL POSTS
5. DRY FIT TOP RAIL CONNECTORS & TOP RAIL
6. INSTALL TOP RAIL
7. INSTALL CABLE INFILL
8. INSTALL HAND RAIL
9. PASSIVATE FRAME & CABLES



Just follow these simple steps:

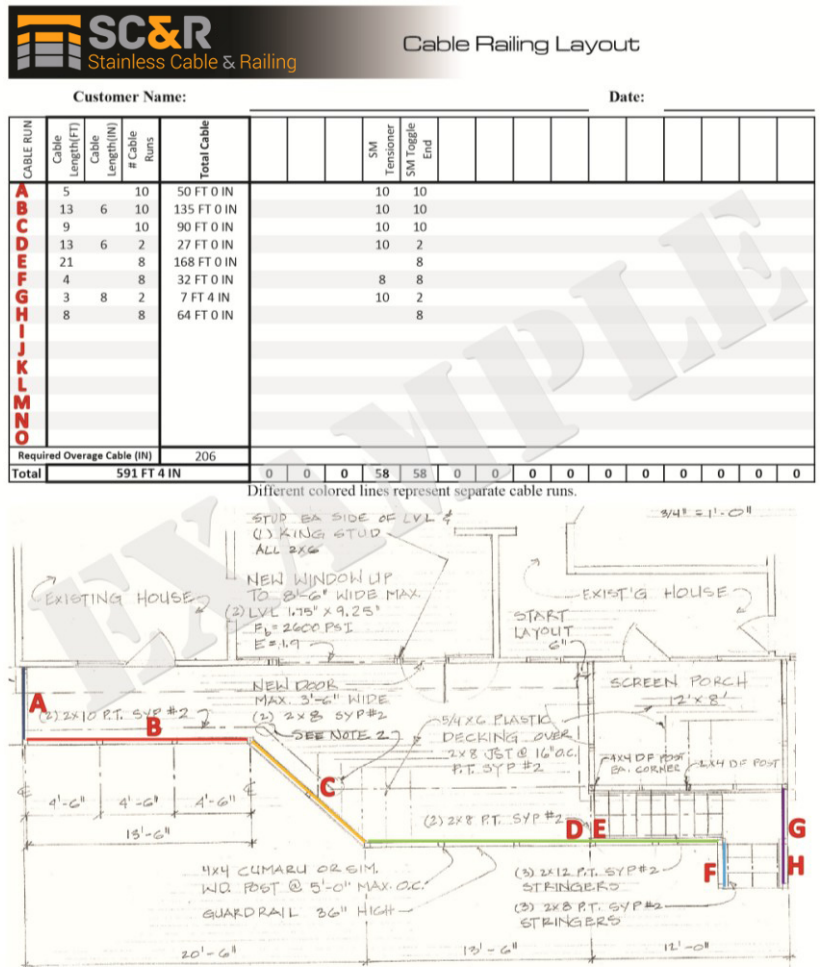
1. NECESSARY TOOLS

1. MEASURING TAPE
2. LEVEL
3. CHALK LINE
4. CARPENTERS SQUARE
5. POWER DRILL W/ PHILLIPS
DRIVE BIT
6. COMMON DRILL BIT SIZES
7. ACETONE & RUBBER GLOVES
8. ALLEN WRENCH KEY SET
9. BLACK MARKER
10. LOCTITE™

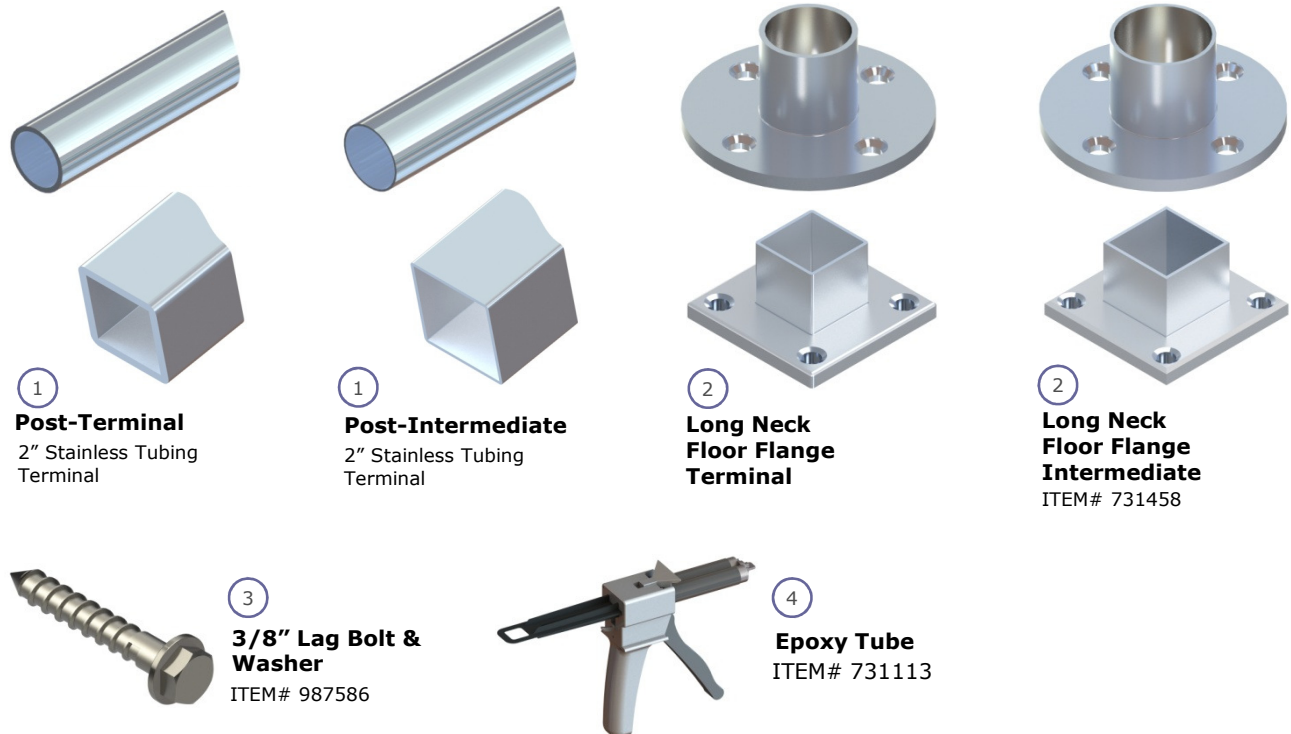


2. LAYOUT

If you have submitted a drawing, follow the layout included with the railing. Posts are labeled and their locations are indicated on the layout. Lay out the horizontal sections first, saving the stairs for last.



2A. DECK MOUNT LAYOUT



For strength, post bases must be screwed into structural framing. Additional framing may need to be added underneath the deck to ensure each post base screw penetrates framing. Use a post base as a template, carefully mark screw holes, then repeat at the other end of the section. Snap chalk lines on your marks. From the chalk lines, using a post base as a template, determine post spacing, mark location of screw holes, then drill pilot holes. For 3/8" lags use a 1/4" pilot hole. For #14 screws use a 5/32" pilot hole.

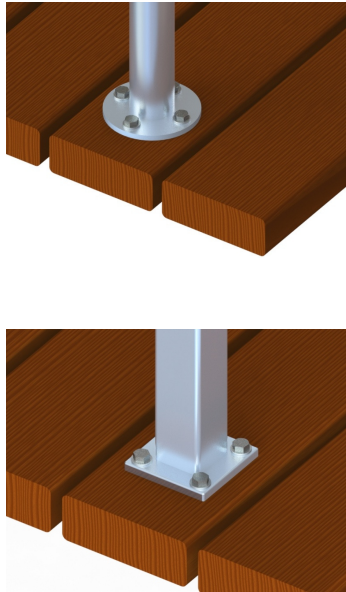
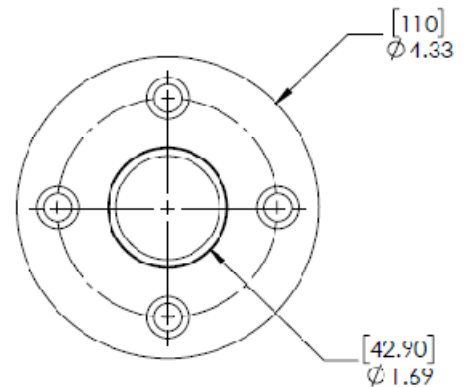
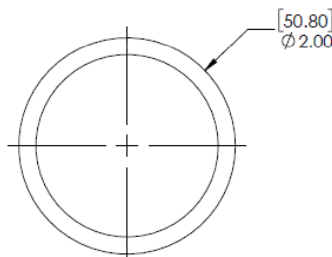
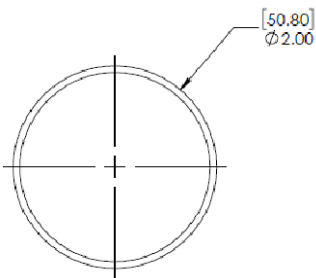
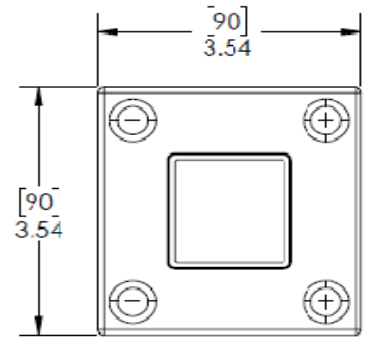
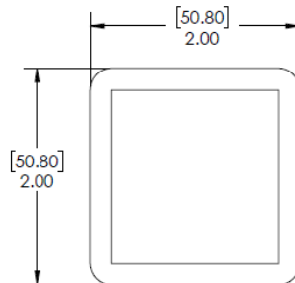
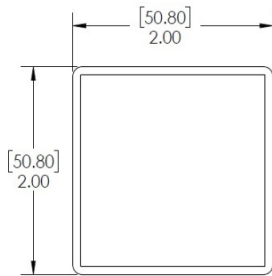
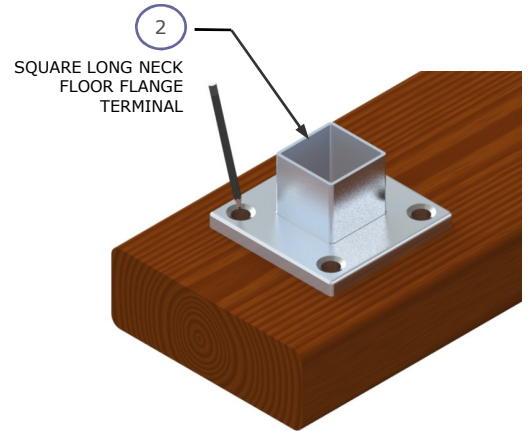
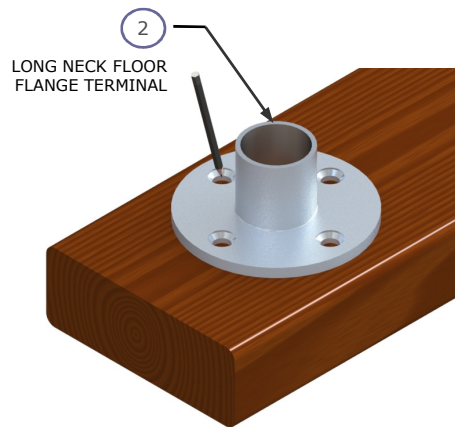


Fig 3: Flange Layout for Deck Mount

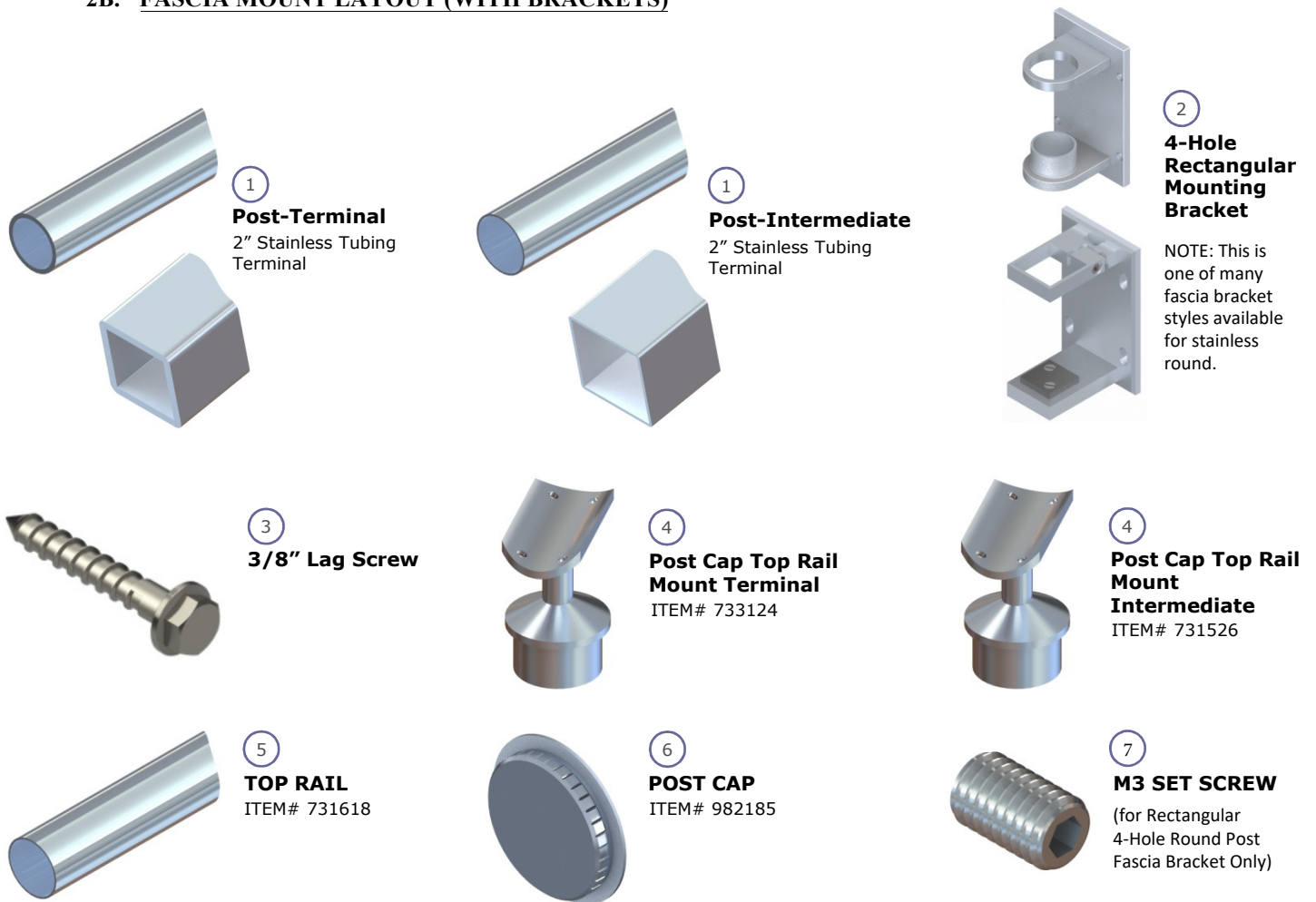


POST
INTERMEDIATE

POST
TERMINAL

LONG NECK FLOOR FLANGE

2B. FASCIA MOUNT LAYOUT (WITH BRACKETS)



ROUND OR SQUARE TUBE W/ BRACKET:

Use the mounting bracket to mount round or square tube onto the fascia.

Use the layout (Fig 2) to determine and mark the bracket location. Additional blocking may be needed for strength and should be added at this time. Adjust mounting location up or down, as needed, keeping in mind the following:

- 3+ Overall rail height. (36"- 42")
- 4+ Gap between the edge of the board and the first cable. < 3" >

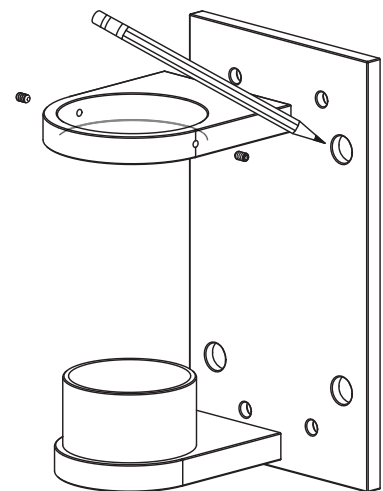
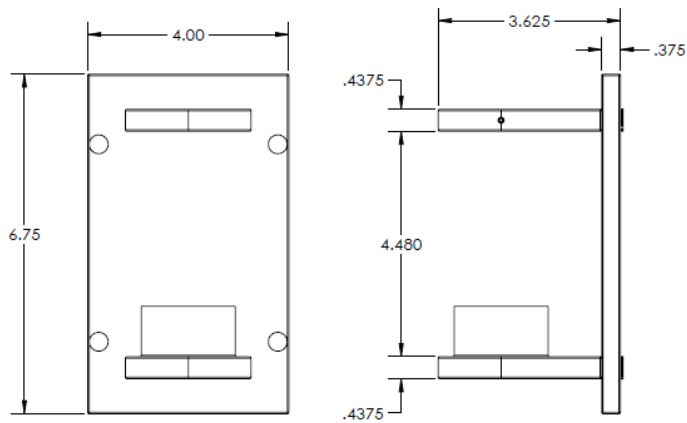
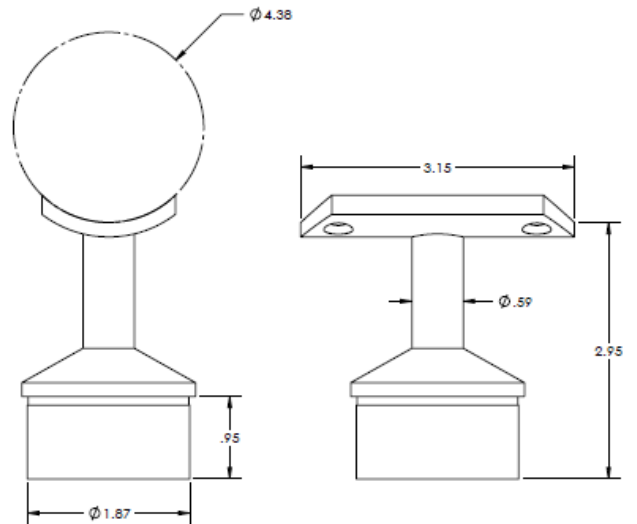


Fig 4

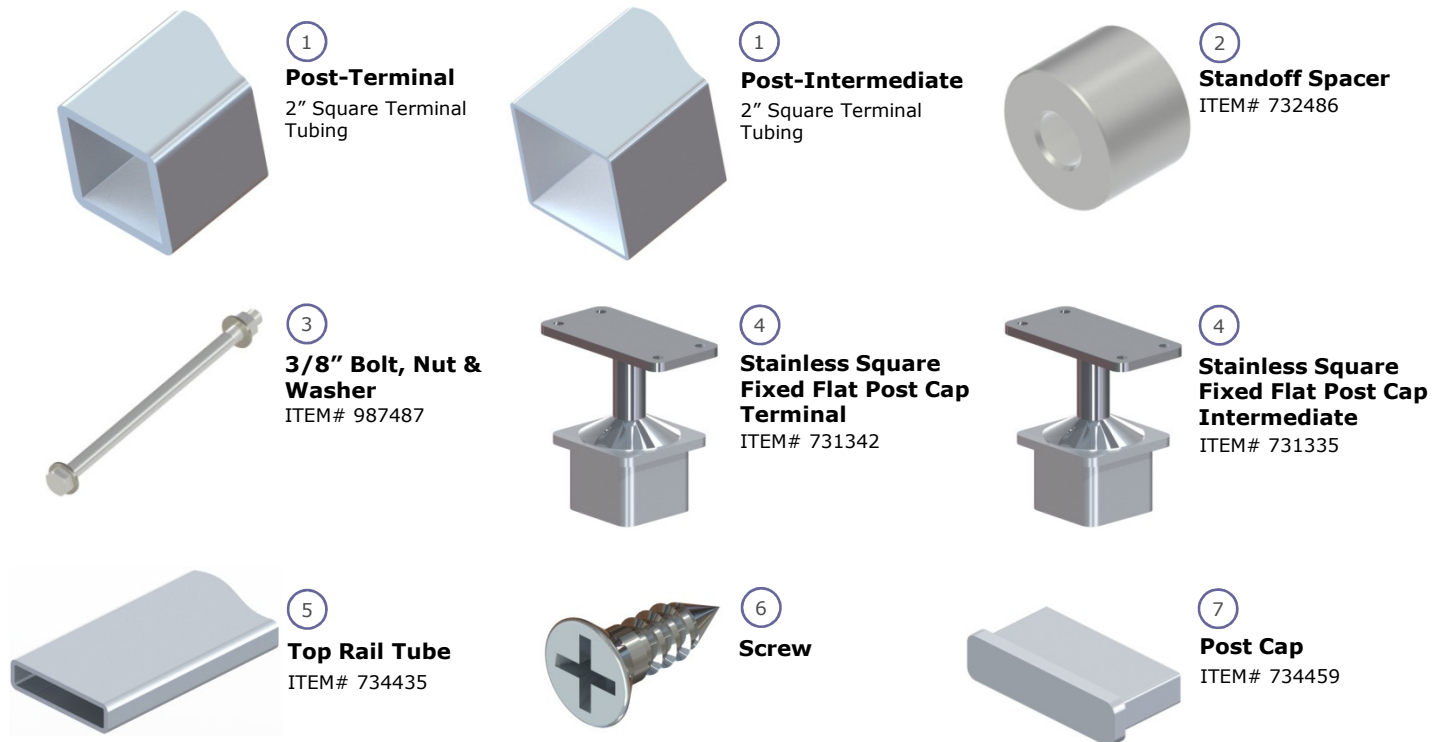
RECTANGULAR 4-HOLE ROUND POST MOUNTING BRACKET



ROUND POST CAP / TOP RAIL MOUNT



2B. FASCIA MOUNT LAYOUT (NO BRACKETS)



SQUARE TUBE (NO BRACKETS):

Square tube is mounted directly to the fascia board with or without the optional Standoff Spacers.

Use the layout (Fig 2) to determine post position. Additional blocking may be needed for strength and should be added at this time. Adjust mounting location up or down, as needed, keeping in mind the following:

- 1) Overall rail height. (36"- 42")
- 2) Gap between the edge of the board and the first cable.
< 3" >

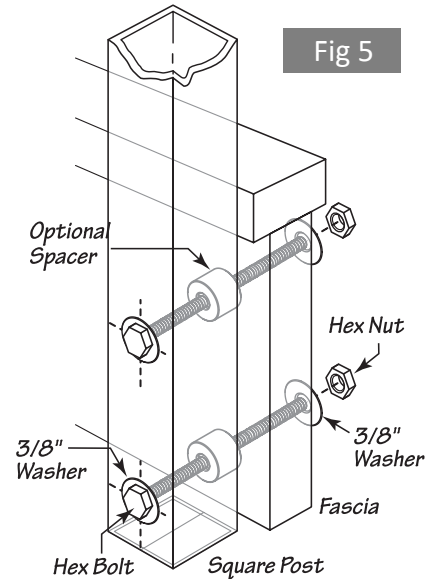
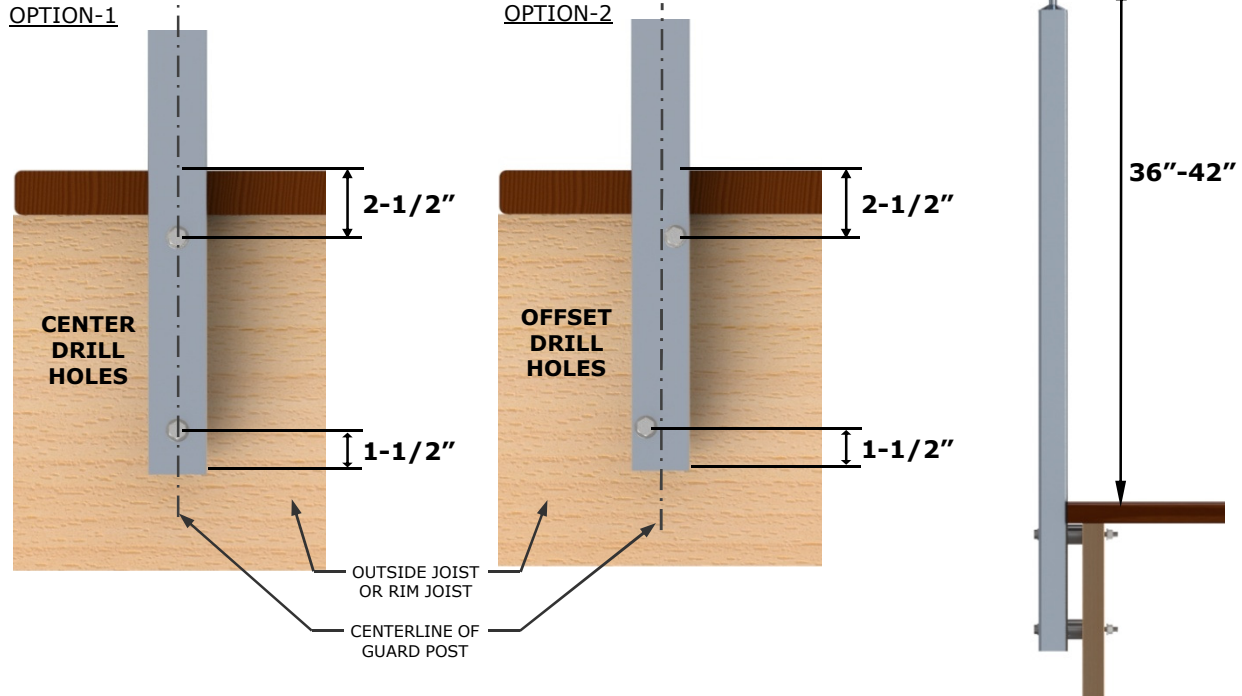


Fig 6: SSQ Fascia Mount Installation



Depending on the mounting hardware chosen, drill (2) appropriately sized holes through the base of each square post. Use the following chart (Fig 7):

Fig 7

Hardware Size	Post Hole Size	Pilot Hole (Wood)
3/8" Bolt	13/32"	13/32"
3/8" Lag	13/32"	1/4"
1/2" Bolt	17/32"	17/32"
1/2" Lag	17/32"	11/32"

CHECK WITH LOCAL BUILDING CODES FOR SPECIFIC REQUIREMENTS FOR POST MOUNTING

3. EPOXY TUBE FITTINGS

Fig 8: Epoxy Tube Fittings

IMPORTANT: Working time at 70 degrees Fahrenheit 3M® DP-190 = 90 minutes
Red Head® Epcon G5 = 15 minutes

After confirming all components fit well together, abrade both parts to be joined with sandpaper and wipe with acetone. Use "3M® DP-190" or "Red Head® Epcon G5" to apply a thick bead inside the post tube where it attaches to the base. Ensure all surfaces to be joined have a coating of epoxy. Join parts together, allowing excess epoxy to ooze out. Wipe off excess with acetone.

Next, epoxy top rail connectors in the same manner. Pull a string line along the top of the posts. Make any adjustments before the epoxy sets (90 min.). Recheck post plumb/level at this time.

4. INSTALL POSTS

DECK MOUNT - Install each post

FASCIA MOUNT

ROUND TUBE:

Fascia brackets are mounted onto post bottoms prior to attaching to the fascia.

Once bracket location is determined, mark the perimeter holes and drill pilot holes in each. For 3/8" lags use a 1/4" pilot hole. For 3/8" bolts use a 13/32" clearance hole.

Install each bracket with the 3/8" lags or 3/8" bolts. Fully tighten. Dry fit post onto bracket. Install set screw until post locks into position.

SQUARE TUBE:

Attach each post using the chosen hardware.

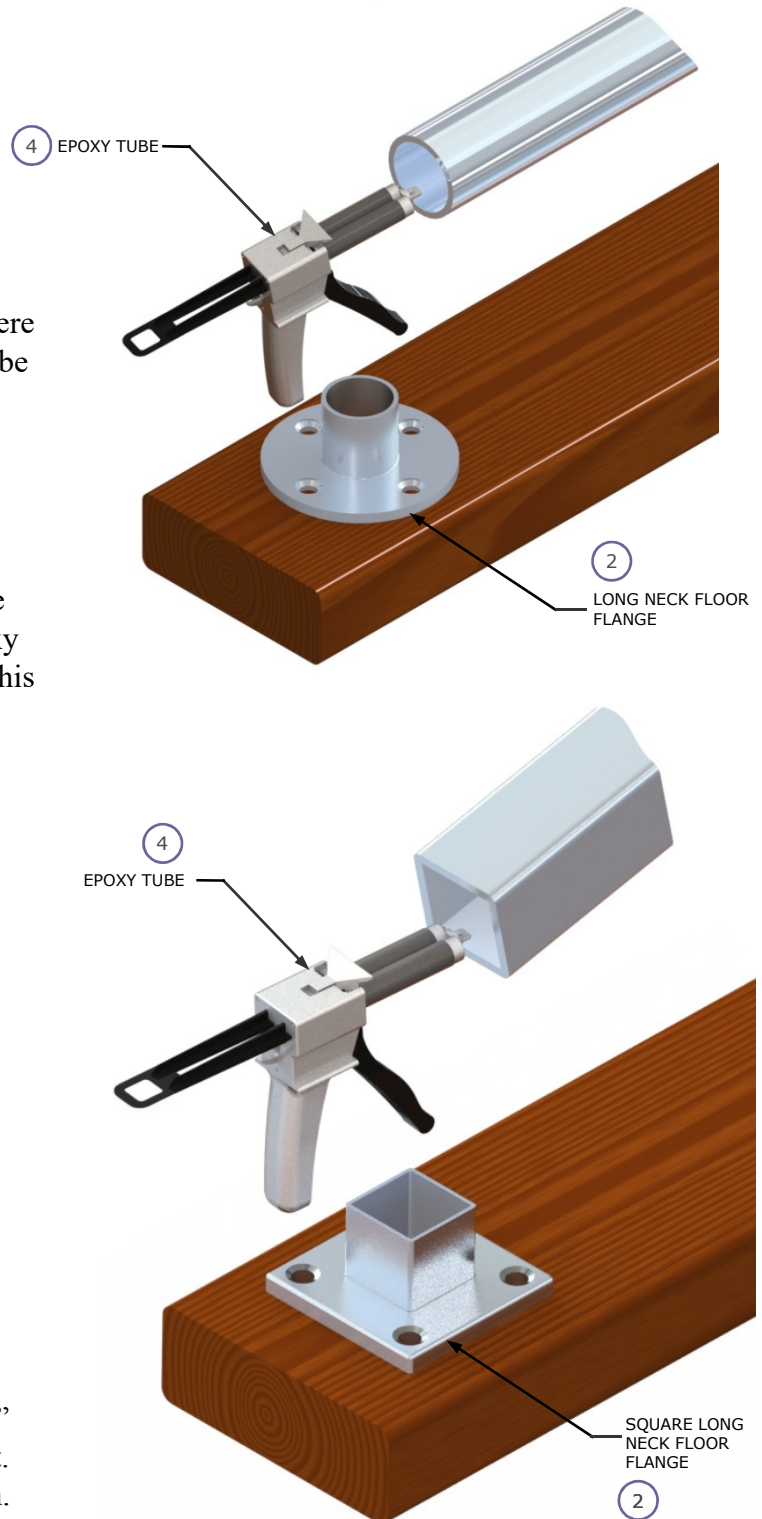
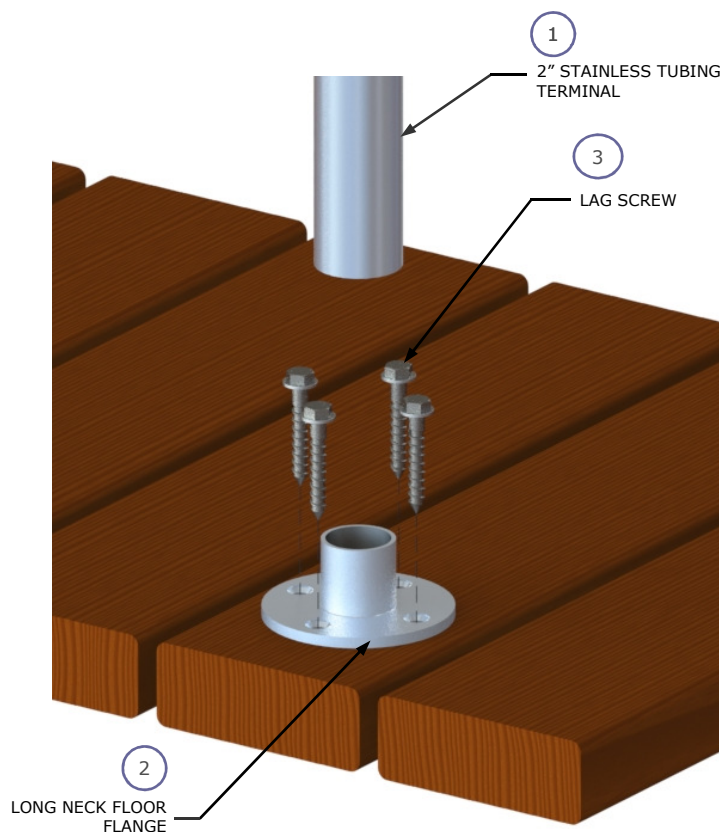
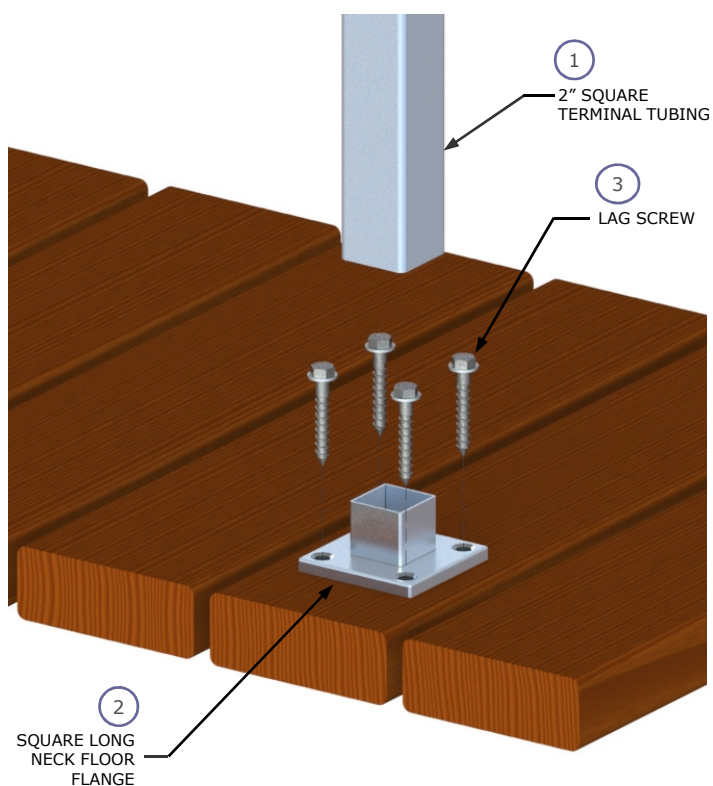
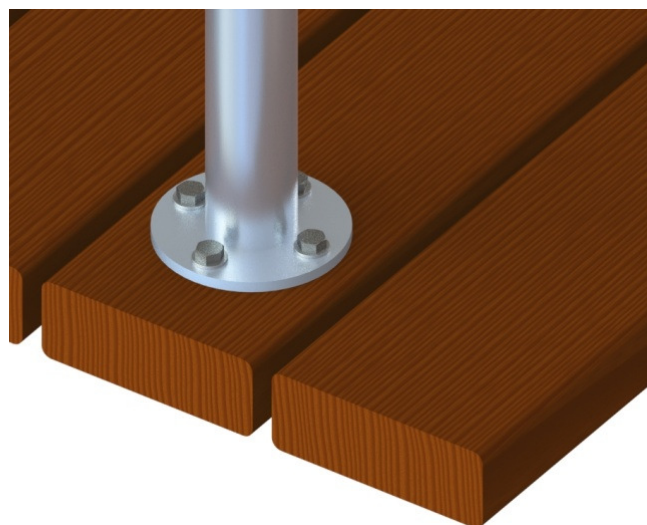


Fig 9: Deck Mounting Posts



SSR DECK MOUNT ASSEMBLY



SSQ DECK MOUNT ASSEMBLY

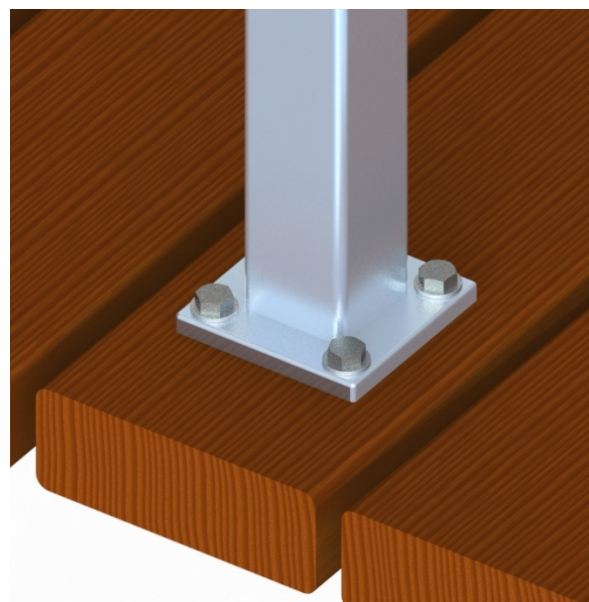
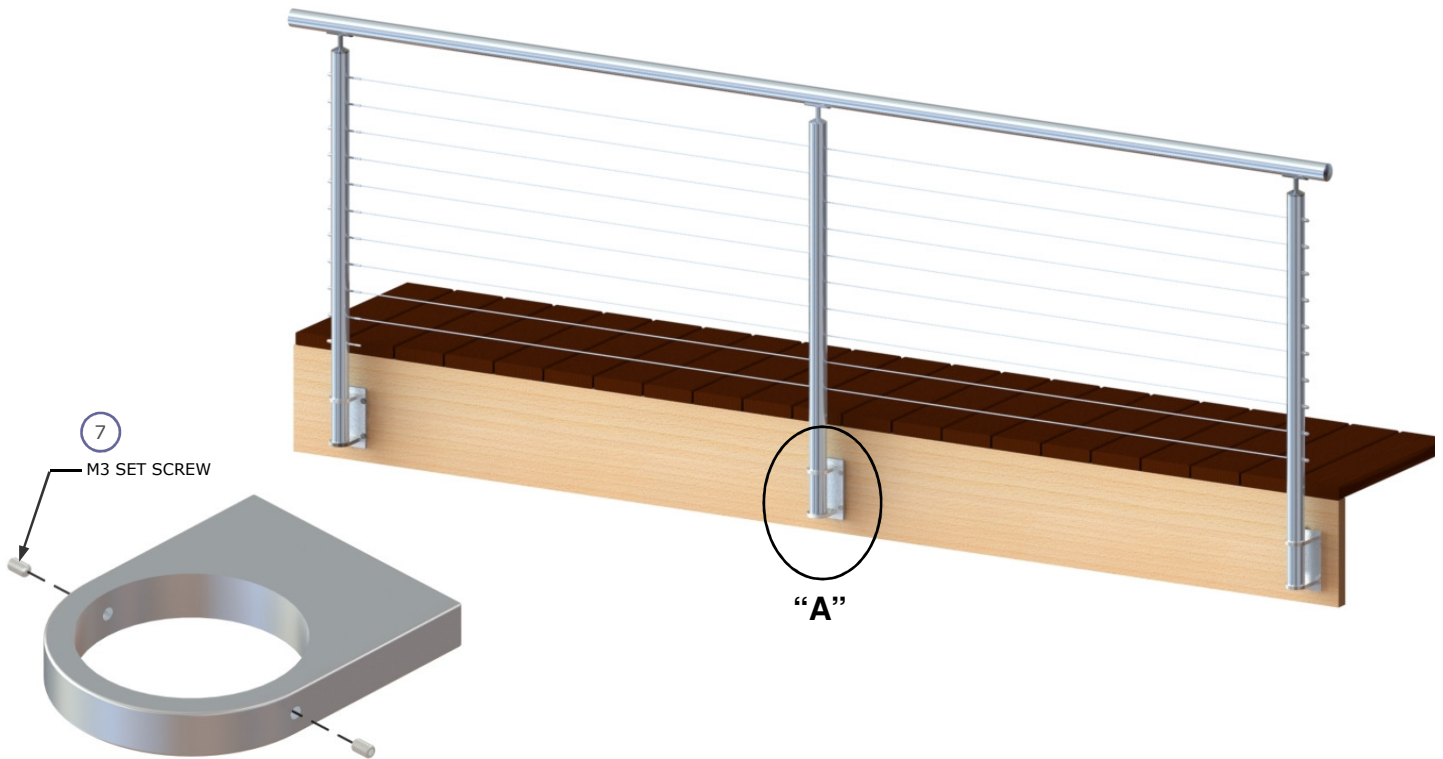
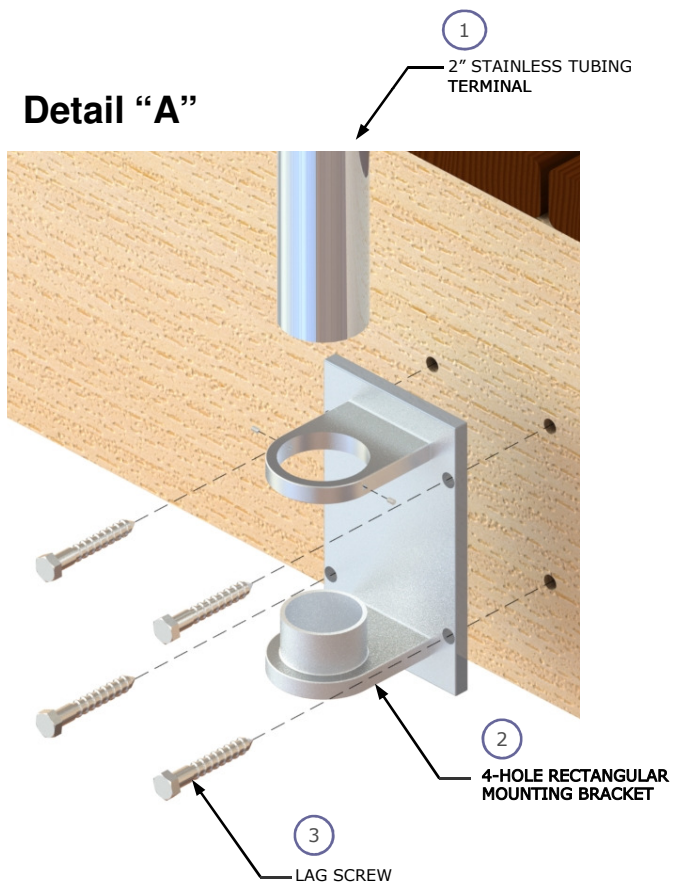


Fig 10: Fascia Mounting Posts



Detail "A"



Detail "A"

SQUARE POST INSTALLATION

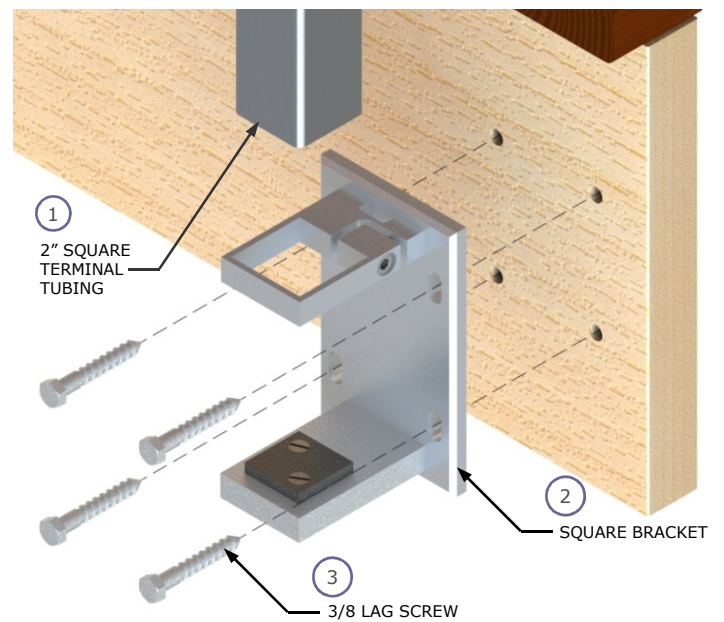
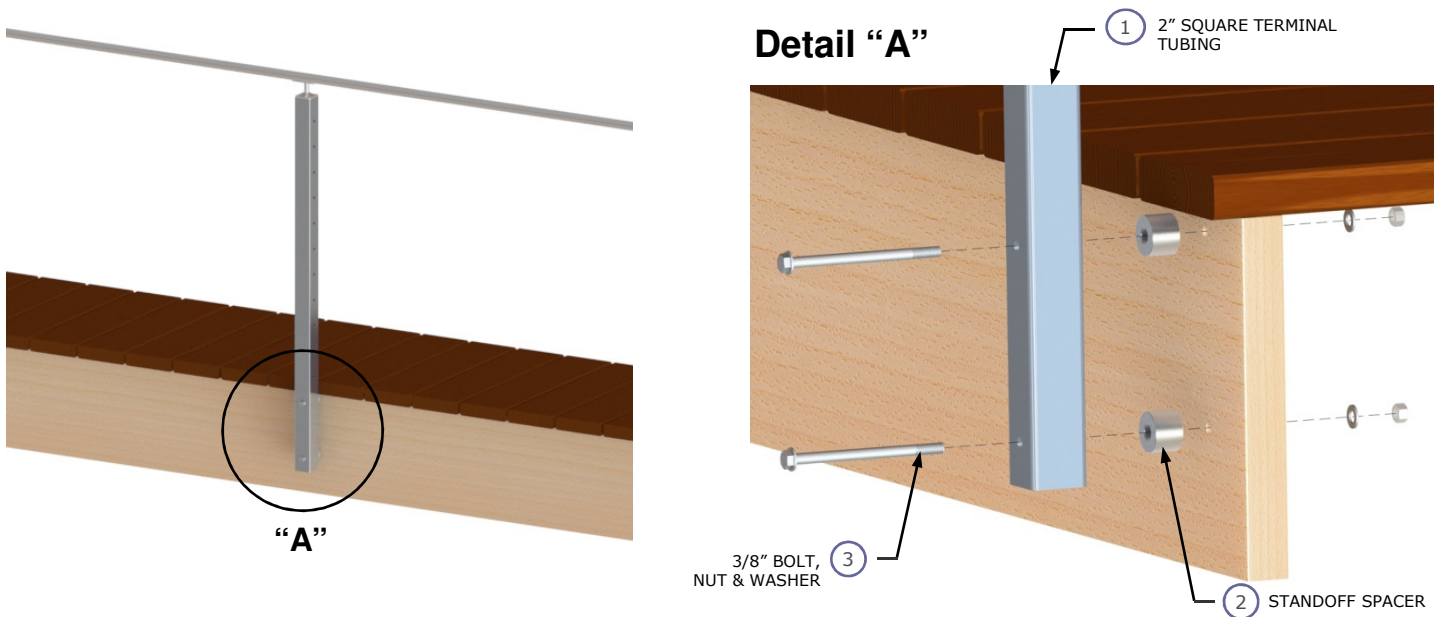


Fig 11: Fascia Mounting Posts Without Brackets



5. DRY FIT TOP RAIL CONNECTORS & TOP RAIL

Ensure all components fit well together and adjust as necessary for plumb.

WOOD TOP RAIL:

A variety of wood top rails work well with stainless tube posts. Fabricate as needed. Mitered corners need reinforcement such as biscuits or dowels.

STAINLESS TUBE TOP RAIL:

Determine the length of tube to be cut, then use the following procedure to cut the tube:

NECESSARY TOOLS

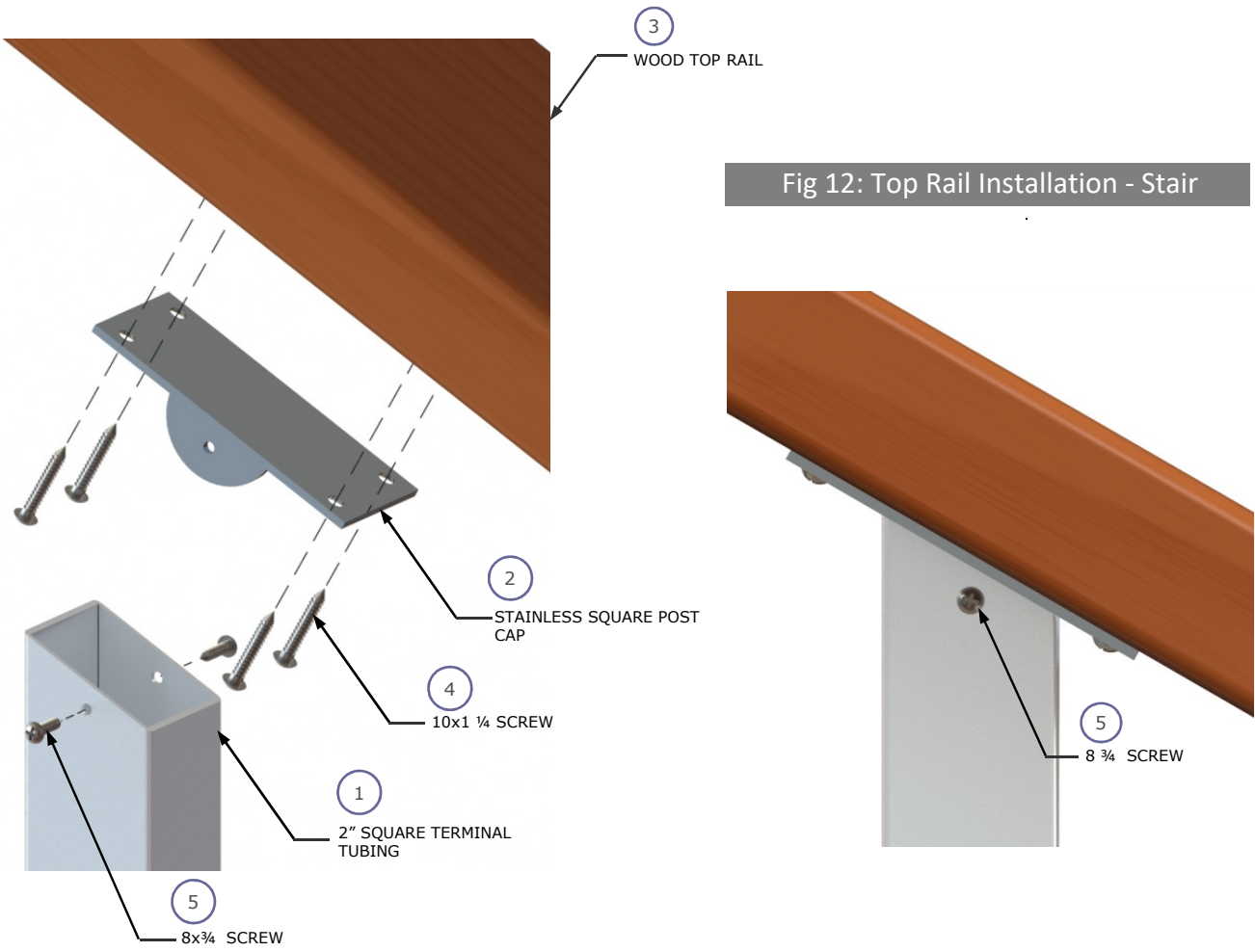
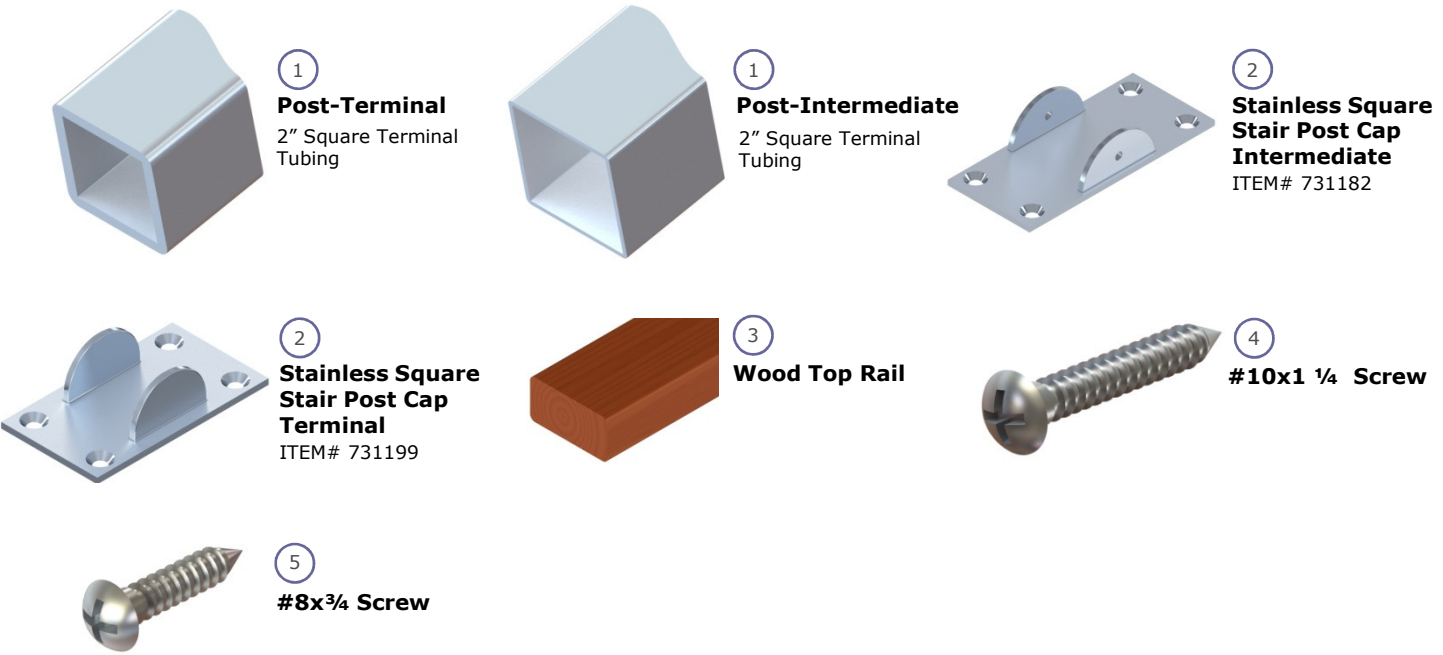
- Safety glasses, leather gloves, ear protection, & long sleeve shirt
- Chop saw
- Abrasive cutting disk

TUBE CUTTING STEPS

1. Starting with the tube up against the backstop, bring the blade up to full speed and bring down with consistent pressure. If possible have an assistant stream a little water on the cut to minimize heat buildup.
2. Remove the outside burr using a disk grinder and the inside burr with a round file. A Dremel™ tool also works for this purpose.
3. Remove discoloration with Scotch-Brite™ and/or 180 grit sandpaper. Apply moist Citrisurf 2310 liberally to cut surface using a sprayer, brush, or roller. Let stand 5-10 minutes at room temperature.
4. Use Scotch-Brite™ again to remove any embedded carbon steel left from cutting. Rinse the surface thoroughly with clean water and air dry immediately.

NOTE: Stair posts are sometimes sold un-drilled. Angled holes are required to accept the cable assemblies. Stair posts should be dry fitted with angled hole locations (determined using string lines). For easier drilling, remove the posts prior to bonding. Additional cuts (straight and/or mitre) are needed for stair post tops, depending on the type of post caps being used.

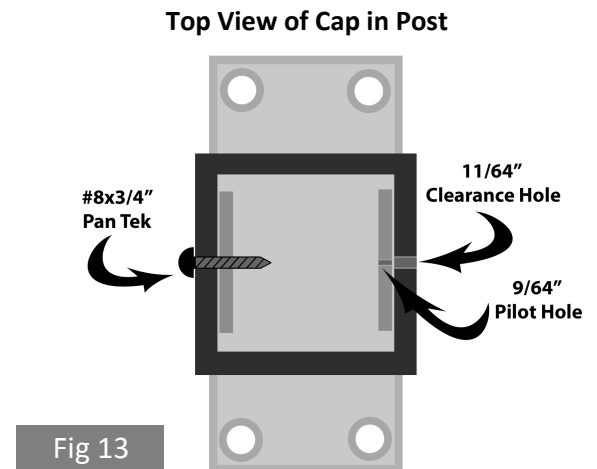
IF USING SSQ LO POST CAPS, please follow these directions:



Screw post cap to the underside of top rail before inserting it into post. Use a 11/64" drill to create a clearance hole through the outer face of the post and a 9/64" drill to create a pilot hole through the rounded parts of the cap.

Once cap is inserted and the clearance and pilot holes are lined up, use #8x3/4" Pan Tek Screws to secure the cap in the post.

Reference Fig. 12-13 for assistance.

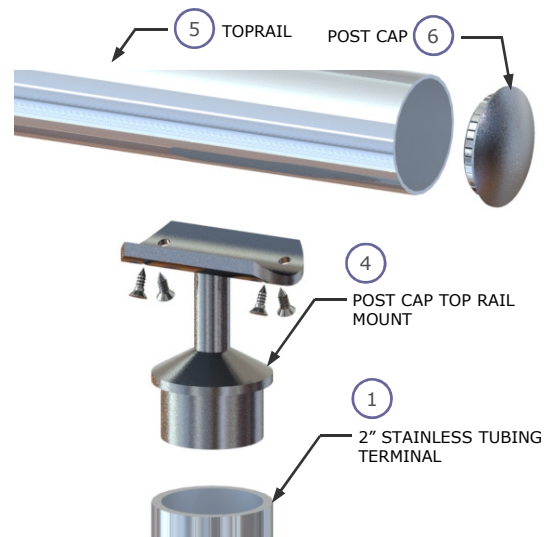


6. INSTALL TOP RAIL

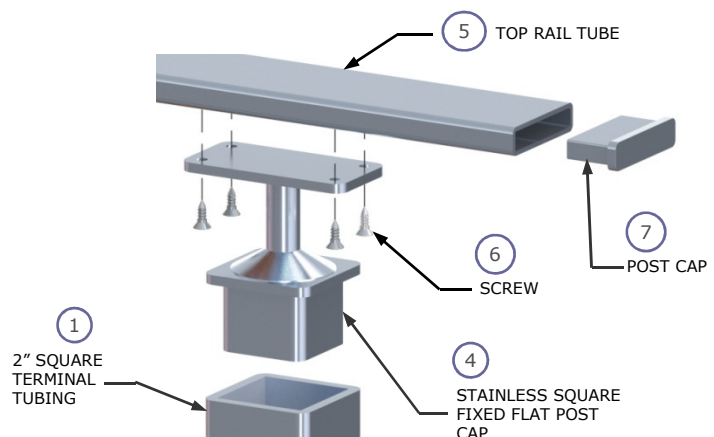
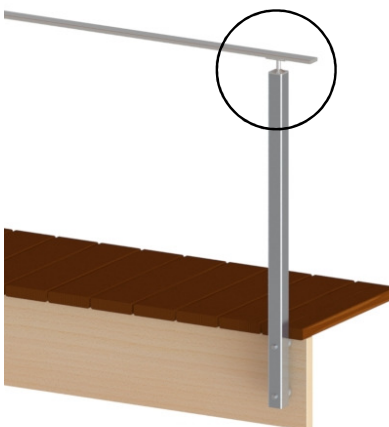
NOTE: Reference Step 5 for tube cutting instructions, if necessary.

Insert post caps into posts and secure in place using epoxy. Rest the cut top rail on the saddles of the post caps. Apply a small amount of supplied anti-seize lubricant to the threads of the screws (6 in the figures below) and use them to secure the connection between the post caps and top rail.

SSR FASCIA MOUNTING INSTALLATION



SSQ FASCIA MOUNT INSTALLATION



7. INSTALL CABLE INFILL - Reference the included instructions.

IF YOU USED EPOXY: Wait until the epoxy has fully cured before installing and tensioning the cables. Cure time varies between brands and formulas. Consult the instructions on the epoxy tube and packaging for cure times.

8. INSTALL HAND RAIL

Handrail brackets to be mounted on the posts, require rivet nuts which establish threaded attachment locations. If included in the railing design, reference the guide provided with the rivet nut installation tool and the following instructions:

- Locate the desired placement of the bracket and carefully drill a 23/64 hole which is included with the tool. Note: Drills sometimes do not drill perfectly round holes, and you may need to use a round file to reshape the hole until the rivet nut fits.
- For square or flat surfaces, countersink (included) the hole until the rivet nut sits flush with the surface.
- For round posts, countersink the hole until only the center of the rivet nut is flush with the surface. With a file or grinder, carefully clean up any excess material that prevents the bracket from seating properly. Care must be taken to avoid marring the surface beyond that which is covered by the bracket

9. PASSIVATE FRAME & CABLES

Spray and wipe down your completed cable railing using CitriSurf® Passivator (available through our website) and a clean cloth, to make sure all stainless steel is passivated and will properly resist corrosion. Then apply Rust Rescue to reinforce and prolong the passivation. Read the “Marine Grade Stainless Steel Maintenance and Cleaning Procedures” that follow for additional information and instructions.

Need Assistance? Call **1-888-686-7245(RAIL)**



Marine Grade Stainless Steel Maintenance and Cleaning Procedures

Stainless Cable & Railing Inc. offers Marine-Grade Stainless Steel railing frames and cable infill that boast high resilience with little maintenance. The material is in and of itself corrosion resistant thanks to a thin “passive layer” of alloying elements that forms on the surface of stainless steel. While this protective layer is strong enough to withstand typical wear and tear, it's not impervious.

We want our customers to get the most out of their cable railing and encourage periodic maintenance to keep cable infill clean, beautiful, and strong for years to come. This is especially important for exterior applications, particularly those in harsh outdoor environments exposed to salt water, industrial pollutants, de-icing salt spray, atmospheric dirt, traffic film, etc.

Perform the following procedures to keep your railing clean and preserve your warranty. You can purchase the necessary supplies through our store individually or together in a kit. Make sure to read the “WARNINGS & TIPS” on the second page.

Initial / Periodic Cleaning:

Follow this procedure immediately after installing your railing.

1. Spray CitriSurf® onto your frames and/or cables and wipe down using a clean, soft cloth.
2. Once all stainless surfaces have been cleaned and passivated using the CitriSurf® prepare Rust Rescue 200 by shaking or stirring the mixture.
3. Using a clean, soft cloth, sprayer, brush, or roller, apply Rust Rescue to your stainless steel frame and/or cables. Wear gloves while handling Rust Rescue (during steps 3-4), as it can cause skin irritation for some people.
4. Wait 2-3 minutes, then wipe off excess.
5. Allow the remaining solution to dry completely. A hot air oven, hair dryer, or other drying medium may be used to accelerate this process.

Repeat this procedure on a regular basis as needed to keep your stainless steel bright and shiny. For coastal applications, we recommend this be done every 2-3 months or so, depending on necessity.

General Cleaning:

Remove finger prints and other marks generated from daily use as needed. Apply mild soap and water or glass cleaner to area using a clean cotton cloth or chamois. Rinse clean with water and dry completely.

Oil, Grease, and Residue Cleaning:

Remove oil, grease, or residue left from other cleaning materials (such as floor cleaner or polishing detergents) as soon as possible. Apply alcohol-based products (including methylated spirit and isopropyl alcohol) or other solvents (such as acetone) several times using a clean, non-scratching cotton cloth until all traces have been removed. Use Aluminum Oxide Scotch Brite if necessary. Rinse clean with water and dry completely.

Paint and Graffiti Cleaning:

Remove as needed using proprietary alkaline or solvent-based paint strippers. Apply chosen cleaning solvent several times with a clean, non-scratching cotton cloth until all traces of paint have been removed. Use Scotch Brite if necessary. Rinse clean with water and dry completely.

Salt Film and Environmental Deposit Cleaning:

Perform cleaning regularly in consideration of environmental conditions and the rate of deposit build up. Use a clean cotton cloth with CitriSurf® solution (available in our store) to remove contamination. Apply cleaner evenly across cables to avoid a patchy appearance. Rinse clean with water and dry completely. Follow up with the Rust Rescue application procedure detailed in "Initial / Periodic Cleaning" on the previous page. Use Aluminum Oxide Scotch Brite if necessary.

WARNINGS & TIPS

- Avoid use of the following products, as they will harm your cables:
 - Chloride-containing cleansers
 - Hypochlorite bleaches. Should accidental contact occur, rinse off immediately with copious amounts of fresh water.
 - Muriatic acid (commonly used to clean up tile/concrete installations)
 - Silver-cleaners
 - Scouring powders
 - Hard scrapers or knives
 - Non-stainless steel-based scouring pads, cleaning wool, or wire brushes
 - Any cleaning utensils that have been used on “ordinary” (carbon) steel, as this may result in iron particle “cross-contamination”
- Do not leave stainless cables or fittings in contact with steel, iron, or any other metals, as this will cause rusting due to free-iron transfer. If your frame is made of a material other than stainless steel, use protective grommets or sleeves (which can be found in our store) to keep the metals from coming into contact.

Please follow these procedures to get the most out of your stainless steel frames and cable infill by Stainless Cable & Railing Inc.

If you have any questions, call us any time at 1-888-686-7245.

CitriSurf is a registered trademark of Stellar Solutions, Inc., McHenry, IL US